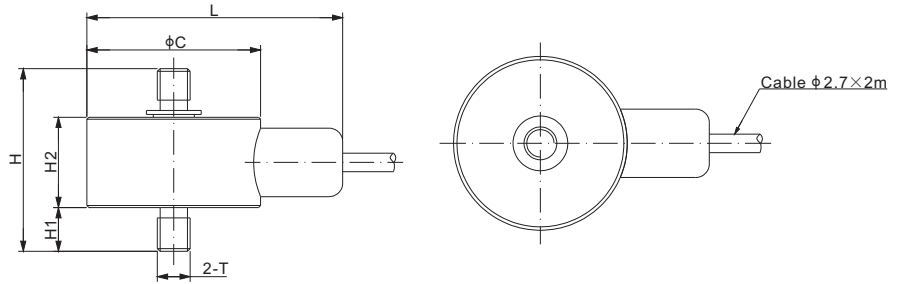
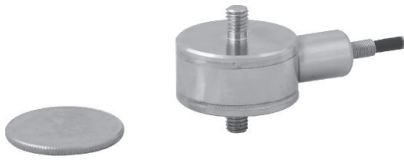


247BSWM

Stainless Steel



LOAD BUTTONS

DIMENSIONS

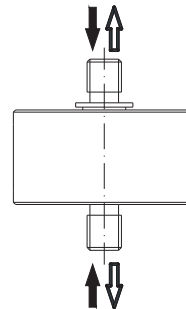
RATED CAPACITY	C	L	H	H1	H2	T
lb/inches						
10	0.75	1.22	1.01	0.25	0.45	#6-32 UNC-2A
25-100	1.00	1.47	1.05	0.25	0.52	#10-32 UNF-2A
250-1,000	1.00	1.77	1.32	0.38	0.53	1/4-28 UNF-2A
2,000-3,000	1.00	1.77	1.75	0.50	0.72	3/8-24 UNF-2A
5,000	1.25	2.02	2.23	0.63	0.94	1/2-20 UNF-2A
7,500-10,000	1.38	2.15	2.88	0.88	1.09	3/4-16 UNF-2A
kg/mm (conversion of above dimensions)						
4.54	19.1	31.1	25.7	6.4	11.4	#6-32 UNC-2A
11.34-45.36	25.4	37.4	26.7	6.4	13.2	#10-32 UNF-2A
113.40-453.6	25.4	44.9	33.5	9.7	13.4	1/4-28 UNF-2A
907.18-1,360.78	25.4	44.9	44.5	12.7	18.3	3/8-24 UNF-2A
2,267.96	31.8	51.3	56.6	16.0	23.9	1/2-20 UNF-2A
3,401.94-4,535.92	34.9	54.0	73.2	22.4	27.7	3/4-16 UNF-2A

SPECIFICATIONS			
Full Scale Output	2.0 mV/V ± 20%	Element Material	Stainless Steel
Zero Balance	± 0.04mV/V	Recommended Excitation	5V (10V Maximum)
Non-linearity	< ± 0.2%	Insulation Resistance	>2 [50V DC] GΩ
Repeatability	< ± 0.1%	Nominal Temperature Range	-10°C to 40°C / 14°F to 104°F
Hysteresis Error	< ± 0.2%	Safe Overload	150% of full scale
Creep in 30 min.	< ± 0.2%	Breaking Overload	300% of full scale
Input Resistance	375Ω ± 25	Seal Type / IP Rating	Environmentally Sealed / IP66
Output Resistance	350Ω ± 3		

PART NUMBER*

Rated Capacity	Part No.	Weight (kg) Approx.
10lb.....	247BSWM-10lb.....	0.10
25lb.....	247BSWM-25lb.....	0.12
50lb.....	247BSWM-50lb.....	0.12
100lb.....	247BSWM-100lb.....	0.12
250lb.....	247BSWM-250lb.....	0.12
500lb.....	247BSWM-500lb.....	0.12
1Klb.....	247BSWM-1Klb.....	0.12
2Klb.....	247BSWM-2Klb.....	0.20
3Klb.....	247BSWM-3Klb.....	0.20
5Klb.....	247BSWM-5Klb.....	0.20
7.5Klb.....	247BSWM-7.5Klb.....	0.40
10Klb.....	247BSWM-10Klb.....	0.40

APPLICATION EXAMPLES



Compression:
+Output cable Color Code:
 Exc+ Red Exc- Black
 Sig+ Green Sig- White
 Shield Bare

Tension:
+Output cable Color Code:
 Exc+ Red Exc- Black
 Sig+ White Sig- Green
 Shield Bare

* ATEX, FM, IECEx approved versions carry the "-Ex" suffix.