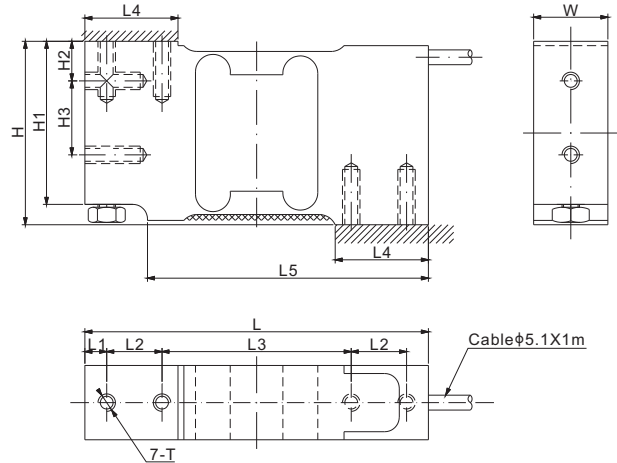
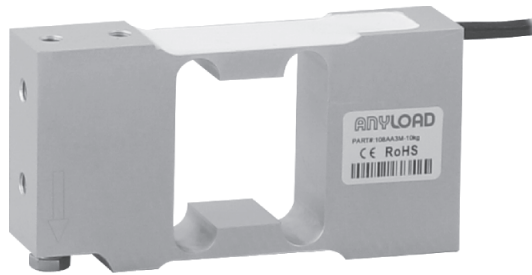


108AA3MUN



Aluminum



DIMENSIONS

RATED CAPACITY	H	H1	H2	H3	L	L1	L2	L3	L4	L5	W	T
kg/mm												
3-90	63.0	56.0	13.6	25.4	118.0	7.5	19.1	65.0	32.0	96.5	25.5	1/4-20UNC Depth19
lb/inches (conversion of above dimensions)												
6.61-198.42	2.48	2.20	0.54	1.00	4.65	0.30	0.75	2.56	1.26	3.80	1.00	1/4-20UNC Depth19

SPECIFICATIONS

Full Scale Output	2.0 mV/V ± 0.25%	Recommended Torque	3 to 30kg: 7Nm(62in-lb) 50 and 90kg: 10Nm(90in-lb)
Zero Balance	± 0.02 mV/V	Reference Max. Platform Size	350 × 350 mm
Non-linearity	< ± 0.03%	Insulation Resistance	> 2 [50V DC] GΩ
Repeatability	< ± 0.03%	Nominal Temperature Range	-10°C to 40°C / 14°F to 104°F
Hysteresis Error	< ± 0.03%	Safe Overload	150% of full scale
Creep in 30 min.	< ± 0.03%	Breaking Overload	300% of full scale
Input Resistance	415Ω ± 15	Seal Type / IP Rating	Environmentally Sealed / IP66
Output Resistance	350Ω ± 3	Cable Color Code	Exc+ Green Exc- Black Sig+ Red Sig- White Shield Bare
Element Material	Aluminum		
Recommended Excitation	10V (15V Maximum)		

PART NUMBER*

Rated Capacity	Part No.	Weight (kg) Approx.
3kg.....	108AA3MUN-3kg.....	0.5
5kg.....	108AA3MUN-5kg.....	0.5
10kg.....	108AA3MUN-10kg.....	0.5
15kg.....	108AA3MUN-15kg.....	0.5
20kg.....	108AA3MUN-20kg.....	0.5
30kg.....	108AA3MUN-30kg.....	0.5
50kg.....	108AA3MUN-50kg.....	0.5
90kg.....	108AA3MUN-90kg.....	0.5

* ATEX, FM, IECEx approved versions carry the "-Ex" suffix.

INTERCHANGEABLE REFERENCE

Manufacturer	Model
Vishay Tedeo-Huntleigh.....	1010
Vishay Tedeo-Huntleigh.....	1015

SINGLE POINTS