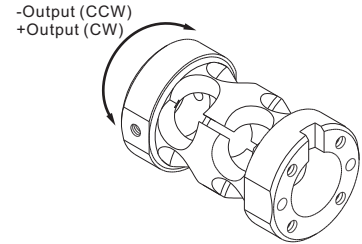
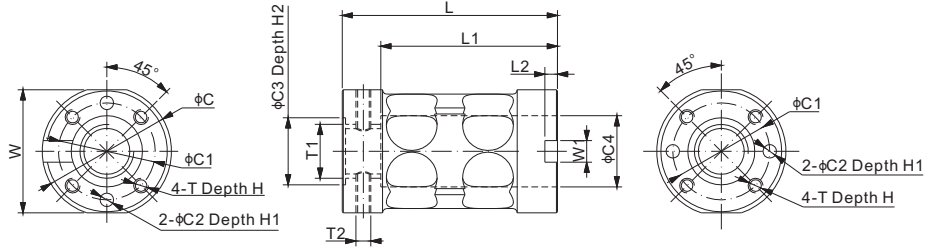
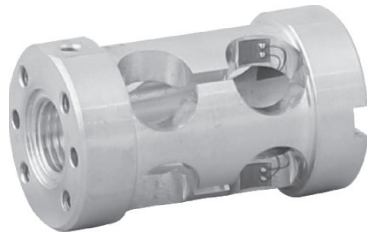


# 112BA

## Aluminum



FORCE MEASUREMENT LOAD CELL



### DIMENSIONS

RATED CAPACITY	C	C1	C2	C3	C4	H	H1	H2	L	L1	L2	W	W1	T	T1	T2
<b>in-oz/inches</b>																
20in-oz~100in-lb	1.20	0.90	0.125	0.62	0.66	0.25	0.25	0.03	2.00	1.64	0.12	1.14	0.20	#6-32UNC	1/2-20 UNF	#6-32UNC
<b>Nm/mm</b>																
0.14~11.3	30.5	22.9	3.2	15.8	16.8	6.4	6.4	0.8	50.8	41.7	3.0	29.0	5.1	M3	M12	M3

### SPECIFICATIONS

<b>Full Scale Output</b>	2.0 mV/V $\pm$ 20%	<b>Element Material</b>	Aluminum
<b>Zero Balance</b>	$\pm$ 0.04 mV/V	<b>Recommended Excitation</b>	10V (15V Maximum)
<b>Non-linearity</b>	$<$ $\pm$ 0.2%	<b>Insulation Resistance</b>	$>$ 2 [ 50V DC ] G $\Omega$
<b>Repeatability</b>	$<$ $\pm$ 0.05%	<b>Nominal Temperature Range</b>	-10°C to 40°C / 14°F to 104°F
<b>Hysteresis Error</b>	$<$ $\pm$ 0.2%	<b>Safe Overload</b>	150% of full scale
<b>Creep in 30 min.</b>	$<$ $\pm$ 0.2%	<b>Breaking Overload</b>	300% of full scale
<b>Input Resistance</b>	1000 $\Omega$ $\pm$ 50	<b>Seal Type / IP Rating</b>	Environmentally Sealed / IP65
<b>Output Resistance</b>	1000 $\Omega$ $\pm$ 5	<b>Cable</b>	No Cable

### PART NUMBER\*

Rated Capacity	Part No.	Weight (kg) Approx.
20in-oz.....	112BA-20in-oz.....	0.07
50in-oz.....	112BA-50in-oz.....	0.07
12in-lb.....	112BA-12in-lb.....	0.07
50in-lb.....	112BA-50in-lb.....	0.07
100in-lb.....	112BA-100in-lb.....	0.07
0.14Nm.....	112BA-0.14Nm.....	0.07
0.35Nm.....	112BA-0.35Nm.....	0.07
1.5Nm.....	112BA-1.5Nm.....	0.07
5.6Nm.....	112BA-5.6Nm.....	0.07
11.3Nm.....	112BA-11.3Nm.....	0.07

\* ATEX, FM, IECEx approved versions carry the "-Ex" suffix.