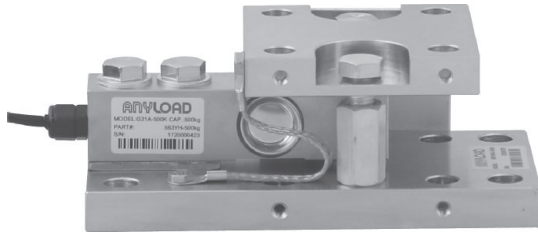


# 563YHM4-02



## Alloy Steel



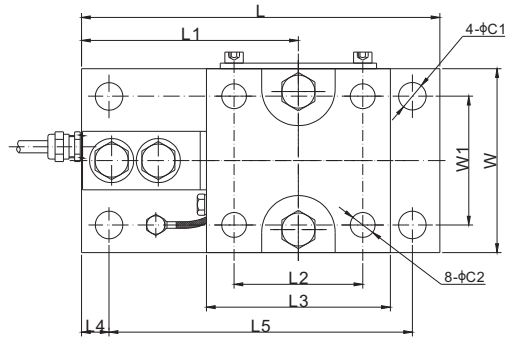
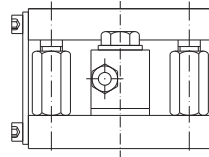
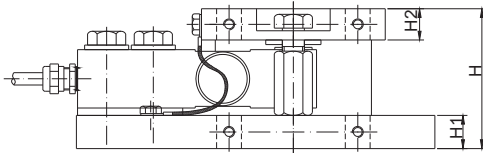
Load Cell Certifications:



Load Cell Not Included.

### Features:

- Assembles: 563YH alloy steel shear beam load cell
- Capacities: 100lb-20Klb/100kg-10t
- Integral "Jacking" for easy load cell removal/installation
- Rocker pin design-allows for 360° thermal expansion
- Both uplift and overload protection with lateral stops
- Versatile mounting options for conventional tank/vessel leg
  - Able to use existing 4-square tank leg mount holes in floor
  - Free to rotate for fixed position 360° w/same 4-mount holes
  - Able to flip entire mount 180° for further mount options
- Side holes each side for shipping & installation brackets
- Flexible stainless steel braided grounding strap



### DIMENSIONS

LOAD CELL CAPACITY	C1	C2	H	H1	H2	L	L1	L2	L3	L4	L5	W	W1
<b>lb/inches</b>													
100-4,000;SE5,000	0.59	0.53	2.99	0.71	0.67	7.68	4.65	2.76	3.94	0.59	6.50	3.94	2.76
5,000-10,000	0.71	0.59	4.33	1.06	0.98	9.57	6.00	3.35	4.72	0.75	8.07	4.72	3.35
15,000-20,000	0.87	0.79	5.73	1.42	1.26	12.52	7.76	4.09	5.98	1.00	10.52	5.98	4.09
<b>kg/mm</b>													
100-2,000	15.0	13.5	76.0	18.0	17.0	195.0	118.0	70.0	100.0	15.0	165.1	100.0	70.0
3,000-5,000	18.0	15.0	110.0	27.0	25.0	243.0	152.5	85.0	120.0	19.0	205.0	120.0	85.0
10,000	22.0	20.0	145.5	36.0	32.0	318.0	197.0	104.0	152.0	25.4	267.2	152.0	104.0

SE refers to small envelope

### PART NUMBER

Load Cell Capacity	Part No.	Weight (kg) Approx.
100lb-SE5Klb.....	563YHM4-(0.1-SE5)Klb-02.....	4.2
5Klb-10Klb.....	563YHM4-(5-10)Klb-02.....	9.8
15Klb-20Klb.....	563YHM4-(15-20)Klb-02.....	20.5
100kg-2t.....	563YHM4-(100kg-2t)-02.....	4.2
3t-5t.....	563YHM4-(3-5)t-02.....	9.8
10t.....	563YHM4-10t-02.....	20.5