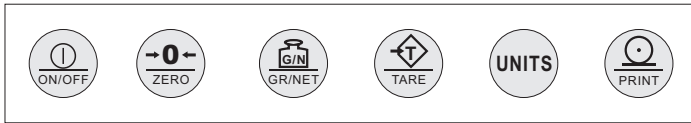


LCD Industrial Weight Indicator



Keyboard Configuration



Specifications	
Power Supply	AC adaptor, 100VAC to 240VAC, 50-60Hz Built-in 10,000mAH internal rechargeable lithium battery
Power Consumption	120VAC @ 0.1A / 12VDC @ 0.5A (10W AC / 5W DC) typical
Excitation Voltage	5V DC ± 5%
Number of load cells	Up to 4x350Ω; 8x700Ω
Input Range	Up to 19mV/4mV/V
Sample Rate	80samples/second
Resolution	1,000,000 internal count, with 24bits resolution
Division	legal for trade 10,000d/20,000d
Tare range	100% Full Scale NTEP/MC/OIML
Communicate interface	2 x RS-232C
Working Humidity	20% RH to 90% RH
Working Temperature	-10°C to 50°C / 15°F to 120°F
Dimensions (W x H x D)	9.1" x 7.4" x 3.0" (231 x 196 x 76mm) base included

PART NUMBER

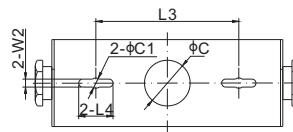
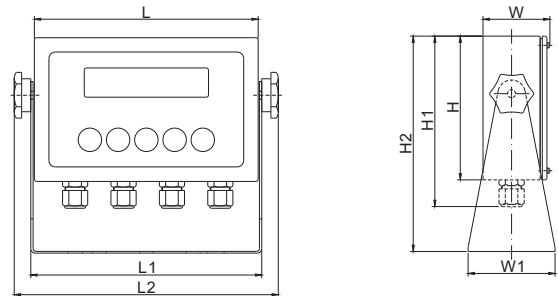
Part No.	Power Supply	Weight (kg) Approx.
815BS-B-21E.....	External.....	2.5

Features:

- 1.0", 6 digits, 7 segments, LCD display
- Tri color backlight: green, red and amber
- Indication of up to four units of measurements: kg, lb, oz and g
- Indication of gross, net and tare
- Indication of stability and centre of zero
- Easy wiring screw terminals
- Weight, peak, set point, and piece counting
- Password protected setup and calibration menu
- Physical and electronic sealing with audit trail function
- Advance analogue, average and digital filtering
- Two independent RS232 communication ports
- UL approved external wall adapter
- Built in lithium battery with internal charger
- Weatherproof stainless steel enclosure, NEMA4X / IP66
- Breather vent to avoid condensation inside

Approvals:

- NTEP: Class III/IIIL 10,000d
- Measurement Canada: Class III / IIIHD 10,000d / 20,000d



DIMENSIONS

L	H	W
7.7in (196mm)	4.9in (125mm)	2.3in (58mm)
L1 8.0in (202mm)	H1 5.9in (149mm)	W1 3.0in (76mm)
L2 9.1in (231mm)	H2 7.4in (188mm)	W2 0.3in (7mm)
L3 4.9in (125mm)	C 1.6in (40mm)	
L4 1.2in (30mm)	C1 0.4in (9mm)	